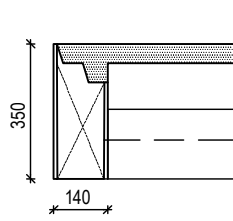
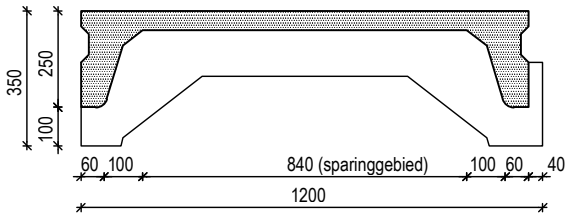
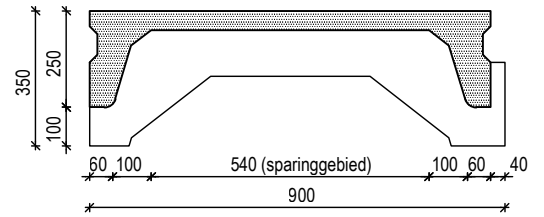


## Sparingsinstructies

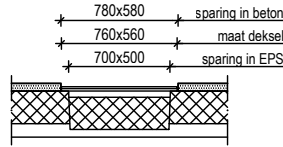
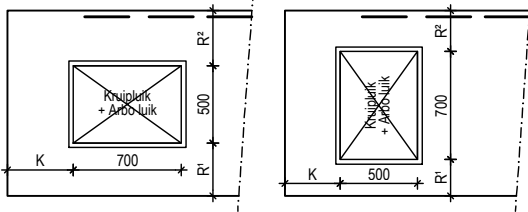
### 1200



### 900

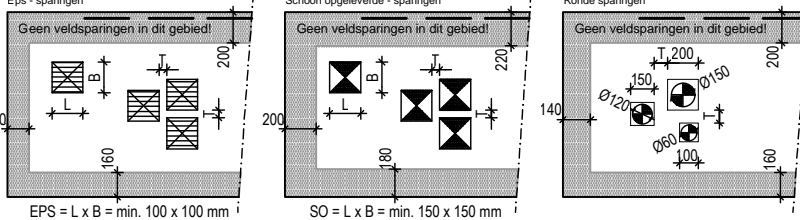


#### 1) Kruipluiksparing

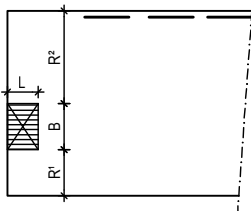


	1200mm / 900mm	
1. Kruipluiksp.	R <sup>1</sup> : min. 200 / 180mm R <sup>2</sup> : min. 240 / 220mm K : min. 250mm	
2. Veldsparing	LxB: min 100x100mm (150x150 SO) T: min. 100mm Ø: 60/120/150mm	
3. Kopsparing	L: min. 150 max. 750mm R <sup>1</sup> : min. 160mm R <sup>2</sup> : min. 200mm	
4. Hoeksparing	1200mm	900mm
100 ≤ L ≤ 300	B <sup>1</sup> : 180 - 980 B <sup>2</sup> : 220 - 980	B <sup>1</sup> : 180 - 680 B <sup>2</sup> : 220 - 720
300 ≤ L ≤ 1500	B <sup>1</sup> : 220 - 980 B <sup>2</sup> : 260 - 980	B <sup>1</sup> : 220 - 680 B <sup>2</sup> : 260 - 720
1500 ≤ L ≤ 3000	B <sup>1</sup> : 220 - 850 B <sup>2</sup> : 260 - 850	B <sup>1</sup> : 220 - 550 B <sup>2</sup> : 260 - 590

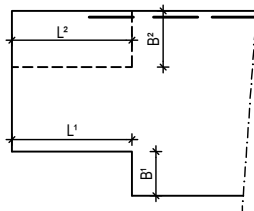
#### 2) Veldsparing



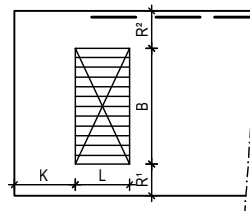
#### 3) Kopsparing



#### 4) Hoeksparing (ribverkorting)

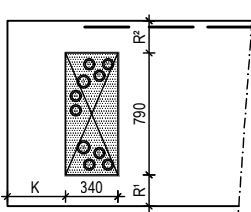


#### 5) Meterkastsparing

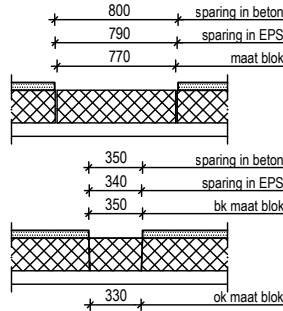
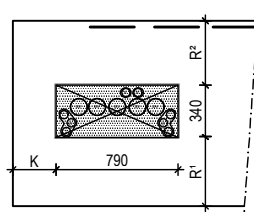


5. Meterkastsp. EPS	L: standaard 350mm B: standaard 750mm R <sup>1</sup> : min. 160mm R <sup>2</sup> : min. 200mm K: min. 140mm	
---------------------	---	--

#### 6) Meterkastblok Standaard

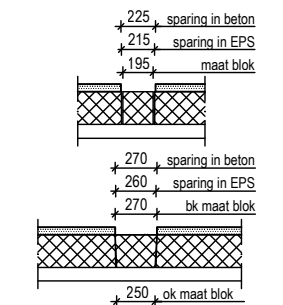
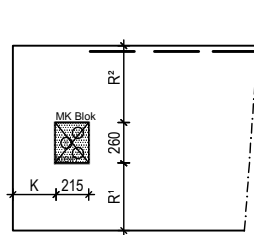
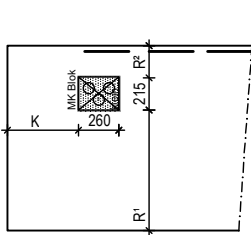


#### 7) Meterkastblok Stadsverwarming



6. Meterkast blok	L: standaard 790mm B: standaard 340mm R <sup>1</sup> : min. 180mm R <sup>2</sup> : min. 220mm K: min. 140mm	
7. Meterkast blok stadsverw.	L: standaard 215mm B: standaard 260mm R <sup>1</sup> : min. 180mm R <sup>2</sup> : min. 220mm K: min. 140mm	

#### 8) Meterkastblok klein



8. Meterkast blok klein	L: standaard 215mm B: standaard 260mm R <sup>1</sup> : min. 180mm R <sup>2</sup> : min. 220mm K: min. 140mm	
-------------------------	---	--

- Sparingmaten olopend met 50mm!